

August 25, 2016

For Translation Purpose Only

MCUBS MidCity Investment Corporation
2-7-3, Marunouchi, Chiyoda-ku, Tokyo
Katsura Matsuo
Executive Director
(Securities Code: 3227)
URL: <http://www.midcity-reit.com/en/>

MCUBS MidCity Inc.
Katsura Matsuo
President & CEO & Representative Director
Naoki Suzuki
Deputy President & Representative Director
TEL. +81-3-5293-4150
E-mail: midcity-3227.ir@mcubs-midcity.com

Notice Concerning Change to Organization at Asset Management Company

MCUBS MidCity Investment Corporation (hereafter “MCUBS MidCity”) announces that, at a meeting of the board of directors of its asset management company MCUBS MidCity Inc. (hereafter “the Asset Management Company”) held today, the Asset Management Company has decided to change its organization as below.

1. Organizational Change

The Compliance Officer will be responsible for compliance as a part of the Compliance Office, while the Compliance Officer and the Compliance Office was different division previously. Also, the Compliance Officer’s operations will be included in the Compliance Office.

2. Purpose for Change

The Asset Management Company has reached the conclusion that it is effective from organization management perspective to establish the comprehensive compliance system by the Compliance Officer and the Compliance Office working together. The organization will have the same structure as its parent company, Mitsubishi Corp.-UBS Realty Inc., with the aim to improve the compliance system further by utilizing the parent company’s expertise in the compliance management system.

3. New Organization

Please see the Attachment for the organizational charts which show before and after the change.

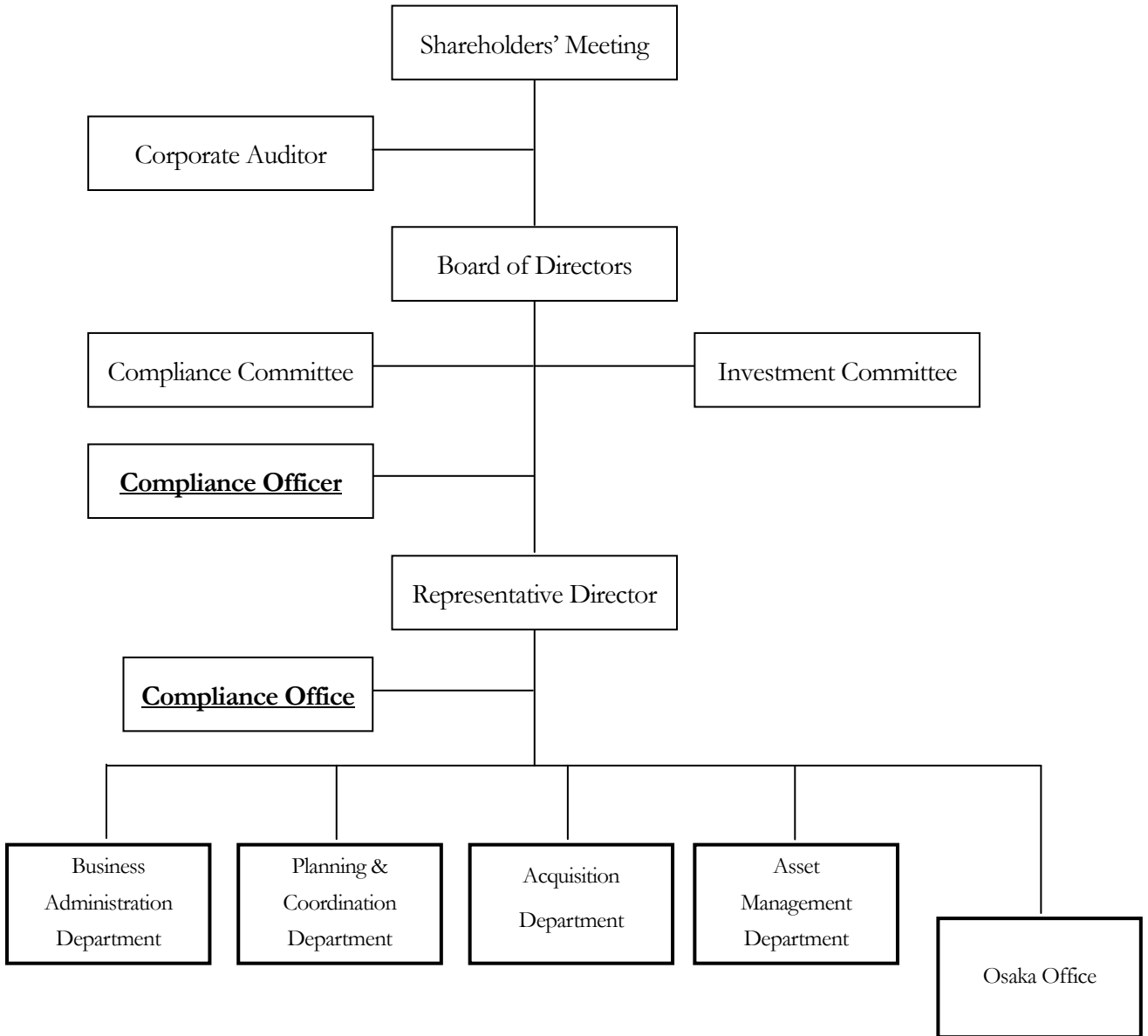
4. Effective Date

September 1, 2016

Necessary filings will be submitted in accordance with the Financial Instruments and Exchange Act, the Building Lots and Buildings Transaction Act and other applicable laws and regulations, etc.

Attachment

Organizational Chart of the Asset Management Company (Before)



Organizational Chart of the Asset Management Company (After)

